

Pupil Workbook

Level 6 Week 4

Name: _____



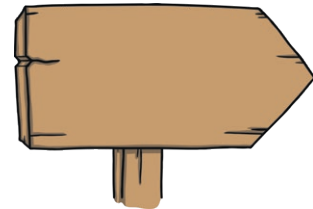
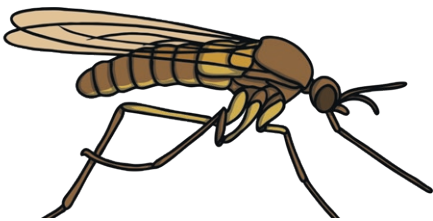
1. Write the common exception words.

Which is the tricky part of the word? Why is that part tricky? Colour the tricky part in a different colour. Write the word two more times.

know

colour

2. Spell the words.



3. Answer the questions.

Read these silly questions and answer them by circling 'yes' or 'no'.

Can you gnash your teeth like a horse? yes no

Would you design a new school badge? yes no

Could a gnome sit on the moon? yes no

n

gn

1. Read and match.

Read the clues and draw a line to match the clue to the correct picture.

Clue 1

I live in a nicely designed burrow. I gnaw on roots and wood to keep my teeth from being too sharp. I have two ears and a fluffy tail.

What am I?

Clue 2

I am campaigning. My sign says to vote for me. I designed it myself.

Who am I?

Clue 3

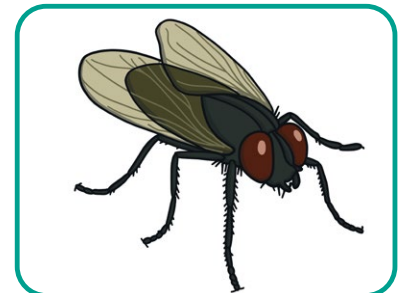
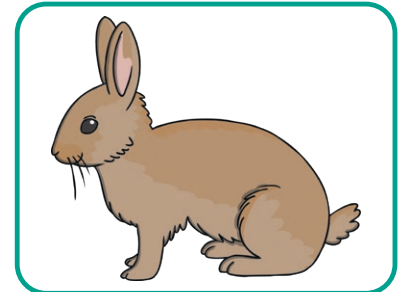
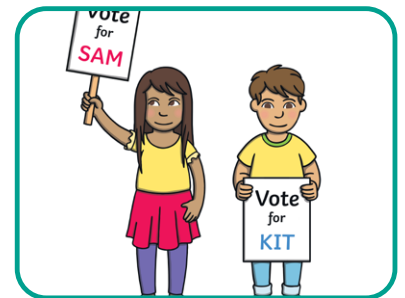
I am outside and full of water. You might see a plastic gnome next to me or ducks floating on me. I can come in different shapes and designs.

What am I?

Clue 4

I am a flying insect like a gnat. You may see me flying in the air or crawling on a leaf or a gnarled bit of wood. My stripy design tells you I can sting.

What am I?



Focus: **gn** saying /n/

The /n/ Sound Family	
n	gn

1. Write the common exception words.

Which is the tricky part of the word?

know

colour

2. Write a word that uses each grapheme.

Fill in the table below. Can you think of a word for each box? Check your spellings with a dictionary.

Use n when...	Use gn when...
<ul style="list-style-type: none"> it is at the beginning, middle or end of a word. 	<ul style="list-style-type: none"> it is at the beginning, middle or end of certain words. We need to learn which words use this spelling pattern as it is not very common.

n

gn

1. Write the sentence your teacher says.

Think carefully about which graphemes to use to spell the words.

How confident do you feel?



n

gn

1. Write your own silly sentence.

Use words containing the **gn** grapheme.

y



fly

dge



bridge

ge



fringe

gn



gnome

kn



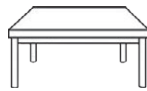
knife

wr



wrist

le



table

eer



deer

ture



picture

mb



thumb

al



walk

a



walnut

o



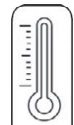
glove

ey



monkey

war



warm

wor



world

s



treasure

wa



watch

qua



squash

tion



station

Level 6 Week 4 Additional Activities

Focus: **gn** saying /n/

The /n/ Sound Family

n

gn

1. Practise spelling the focus words.

Look and Say	Look, Say and Write	Cover and Write	Check
gnome			
sign			
gnaw			
gnat			
design			
gnarl			
gnash			
campaign			
know			
colour			